

### Prime area: Personal, Social and Emotional Development

Children will learn:

- to learn to persevere when faced with challenges
- about setting goals for themselves and how to overcome obstacles. They will be proud of the goals they achieve.

### Prime area: Communication and Language

Children will be:

- following instructions with a two/three part sequence
- learning to work and discuss as part of a small group
- using language to recreate roles and put on a play for parents
- imagining and recreating roles real life situations and in fictional settings
- using tenses past, present and future

### Prime area: Physical Development

Children will learn to:

- travel with confidence and in a range of different ways
- jump on and off objects and land appropriately
- form some recognizable lower and upper case letters
- use a range of outdoor tools such as trowels, screw drivers and hammers

### Specific area: Understanding the World

Children will be:

- exploring and recording the seasonal changes in Winter
- going on walks around the school to observe seasonal changes and the local environment, flora and fauna
- looking at our local area and discovering how it has changed
- looking at people who help us within our community
- investigating materials, especially things that are transparent, opaque, waterproof and permeable
- looking at maps and recording our route to school

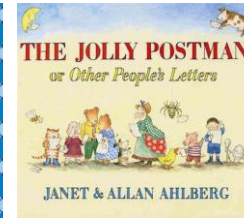
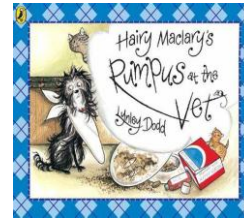


Reception Spring 1

Topic: What is Hattersley like?

Winter

Key texts:



### Characteristics of effective learning

#### Playing and exploring – engagement

Finding out and exploring

Playing with what they know

Being willing to 'have a go'

#### Active learning – motivation

Being involved and concentrating

Keeping trying

Enjoying achieving what they set out to do

#### Creating and thinking critically – thinking

Having their own ideas

Making links

Choosing ways to do things

### Specific area: Literacy

Children will be:

- engaging in a range of fiction and fact books
- Reading simple phrases and sentences made up of words with known letter–sound correspondences and, where necessary, a few exception words
- learning to hear, say and write initial sounds and/or words
- writing for a purpose e.g. labelling pictures, writing captions, speech bubbles, facts and simple sentences
- recounting a traditional tale
- writing facts about our local area and people who help us

### Specific area: Mathematics

Children will be learning:

- to count, recognize and order numbers to 15
- to match numbers to quantities of groups to at least 15
- to learn how to estimate
- to find different ways to find the total of two groups
- about measure and weight

### Specific area: Expressive Arts and Design

Children will be:

- finding out about the designer Margaret Calvert
- singing a range of new songs and the actions or dance moves to go with them
- doing role play in the doctors and café
- learning about a range of instruments and experimenting with different sounds
- learning to design, make and evaluate their work